

# Penwith Landscape Recovery Project

Penwith is rich in wildlife and historic sites, but still a living, working landscape. Working in partnership, we will design a scheme that benefits landowners, the community and the environment.



**Cornwall**  
Wildlife Trust

(C) Chun Quoit sunset, Ben Watkins

## What is Landscape Recovery?

Landscape Recovery is one of three Environmental Land Management (ELM) schemes, funded by DEFRA, alongside Sustainable Farming Incentive and Countryside Stewardship.

All 3 schemes will support farmers and the community to deliver similar things – clean and plentiful water, thriving plants and wildlife, climate change adaptation and mitigation, healthy soils and public access – but each will do so in different ways.

Landscape Recovery offers farmers, land managers and wider community the opportunity to co- design a bespoke agreement for environmental and climate management across landscape scale projects.

There are 4 main distinguishing features of the Landscape Recovery scheme:

1.

Large-scale projects: the scheme is designed to deliver outcomes that require collaborative action across a big area, such as restoring ecological or hydrological function across a landscape.

2.

Long-term public funding (e.g. for 20 years or longer): the scheme will support outcomes that take a long time to deliver, such as peatland restoration, woodland management, habitat restoration, community engagement and enhanced access.

3.

Bespoke agreements: the scheme can fund activities that contribute to priority outcomes which are specific to the locality and difficult to facilitate through other schemes.

4.

Blended funding: the features above and the provision of development funding should enable projects to attract private investment.



Bostraze, Ben Watkins

# What are Cornwall Wildlife Trust doing?

Cornwall Wildlife Trust are coordinating the Penwith Landscape Recovery project, working with over 50 landowners and the wider community in your local area to co-design the scheme. The development of this scheme will take 2 years, after which we hope to move to an implementation phase over the next 20 years and beyond.



**Cornwall**  
Wildlife Trust

Bartinney Nature Reserve, Ben Watkins

## What can we offer landowners?

In the first instance, we will be able to support you with free and impartial advice to look at ways your business can access existing, shorter term financial agri-environmental schemes and incentives.

The next stage will be to collaborate with you to design and coordinate a longer-term landscape recovery plan bespoke to the needs of your business, the wider community and environment. Crucially, this will enable you to earn income on land over the next 20+ years if the scheme is approved. This could include land which has recently been designated SSSI status.

## Who should you contact?

We have a team in place to work with farming and wider community during the 2-year development phase of the Penwith Landscape Recovery project.

This includes three Land Management Advisers who will provide tailored support for interested landowners and a Community Engagement Officer who will support any members of the wider community engaged with the Penwith Landscape and support on wider access to the area.

If you are a landowner and are interested in speaking to one of our advisors contact: [PLRTeam@cornwallwildlifetrust.org.uk](mailto:PLRTeam@cornwallwildlifetrust.org.uk)

For community queries contact Luke at:

Phone: 07538415664

Email: [luke.new@cornwallwildlifetrust.org.uk](mailto:luke.new@cornwallwildlifetrust.org.uk)

For more information visit the website here:



# Where are we working? Who are we working with?

The Penwith Landscape Recovery project incorporates land from St Just to St Ives including almost 50% of the new Penwith Moors SSSI.



**Cornwall  
Wildlife Trust**

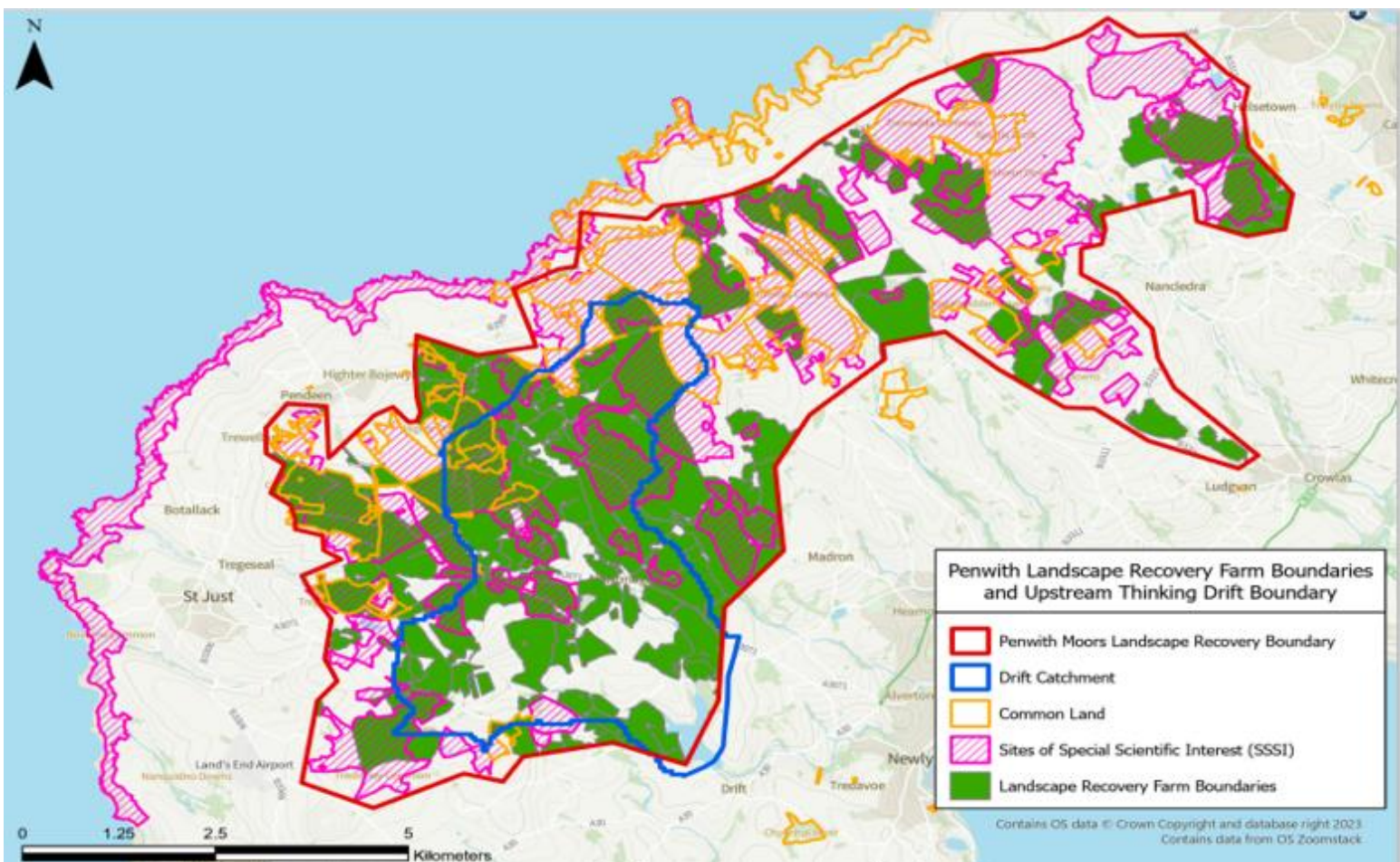
## Project area.

The project area covers a total of 6650ha, with 3024ha of participating land and 54 landowners, including farmers, Cornwall Wildlife Trust Nature reserves, common land and National Trust.

Our Land Manager Advisors will liaise with landowners to create & restore habitats and priority species, create 100 ponds, and support regenerative farming.

The Community & Access team will work with the wider community to manage & enhance public footpaths, bridleways, cycle paths, ancient monuments, public transport, leisure activities, tourism, business, and generally improving access to all.

Land can be added up to November 2024. If you are interested in registering land contact: [PLRTeam@cornwallwildlifetrust.org.uk](mailto:PLRTeam@cornwallwildlifetrust.org.uk)



# How can the community get involved?

The Penwith Landscape is used by a wide variety of the local community and visitors for leisure, business and wellbeing. The focus of the Penwith Landscape Recovery project is to inform and allow the wider community to have a say in how the landscape is managed and accessed in the long term.



**Cornwall  
Wildlife Trust**

## Who?

Walkers, dog walkers, horse riders, cyclists, mountain bikers, adventurers, wildlife watchers, volunteers, climbers, campers, councilors, community organisations, tourists, etc. Whether you are local, or not, if you use and engage in the landscape for leisure or business we would love and value your input.

## Events - 'Cake & Cooperation'

In October & November 2024, we will be holding 'Cake & Cooperation' community events in Parish halls across Penwith.

There will be talks and opportunities for all the community to make suggestions on the long-term management and access of the Penwith Landscape.

To keep informed of these events see your local parish notices and media outlets, our events online at:

[cornwallwildlifetrust.org.uk/events](https://cornwallwildlifetrust.org.uk/events), sign up for the Wildlife Trust newsletter, check our social media, or contact Luke New for more information and updates.

## Event dates:

24<sup>th</sup> October, Zennor Village Hall, 6.30-8.30pm

26<sup>th</sup> October, Sancreed Village Hall, 12.30-2.30pm

26<sup>th</sup> October, Sancreed Village Hall, 6.30-8.30pm

8<sup>th</sup> November, Madron Landithy Hall, 12.30-2.30pm

8<sup>th</sup> November, Madron Landithy Hall, 6.30-8.30pm

13<sup>th</sup> November, St Just WI Hall, 6.30-8.30pm

15<sup>th</sup> November, Nancledra Gilbert Hall, 6.30-8.30pm

21<sup>st</sup> November, Centre of Pendeen, 6.30-8.30pm

## Online survey.

Our online survey will feed your personal suggestions on the long-term management of the Penwith Landscape Recovery area directly to us.

If you have 10 minutes, please follow the link and send us your thoughts



## Contact Luke:

For a 'one to one' conversation with Luke New our Community Engagement Officer.



Phone: 07538415664

Email: [luke.new@cornwallwildlifetrust.org.uk](mailto:luke.new@cornwallwildlifetrust.org.uk)